



1 BUILDING A: NORTH ELEVATION A1  
SCALE 1:200



2 BUILDING A: EAST ELEVATION A2  
SCALE 1:200



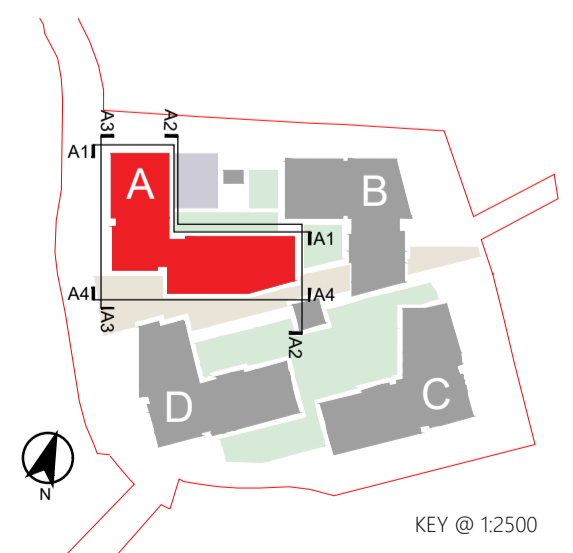
3 BUILDING A: WEST ELEVATION A3  
SCALE 1:200



4 BUILDING A: SOUTH ELEVATION A4  
SCALE 1:200

Materials Key

- 1a. White self-cleaning render finish - final specification, colour and sample to be agreed prior to commencement.
- 1b. Natural grey self-cleaning render finish - final specification, colour and sample to be agreed prior to commencement.
- 2a. Brick type 1 - light grey engineering brick finish brick mix with bright pointing. - final specification, colour and sample to be agreed prior to commencement
- 2b. Brick type 2 - red natural brick with bright pointing. - final specification, colour and sample to be agreed prior to commencement.
- 2c. Brick type 3 - dark grey engineering brick with bright pointing. - final specification, colour and sample to be agreed prior to commencement.
- 3a. Curtain wall system with profile detail -tone 1. - final specification, colour and sample to be agreed prior to commencement.
- 3b. Spandrel panel - tone 2. - final specification, colour and sample to be agreed prior to commencement.
- 4a. Dark grey Powder coated aluminium panel system. - final specification, colour and sample to be agreed prior to commencement.
- 4b. Maroon coloured Powder coated aluminium panel system. - final specification, colour and sample to be agreed prior to commencement.
- 5a. Glazing system with powder-coated aluminium profile frames. - final specification, colour and sample to be agreed prior to commencement.
- 5b. Brick coloured concrete feature proud sill detail. - final specification, colour and sample to be agreed prior to commencement.
- 6a. Painted galvanised steel railing. - final specification, colour and sample to be agreed prior to commencement.
- 6b. Glass guard railing - final specification, colour and sample to be agreed prior to commencement.
- 7. Dark grey metal horizontal louvre system. - final specification, colour and sample to be agreed prior to commencement.
- 8. Vertical Timber cladding -untreated western red cedar or similar. - final specification and sample to be agreed prior to commencement.
- 9. Standing seam dark zinc rolled metal roof system. - final specification, colour and sample to be agreed prior to commencement.



KEY @ 1:2500

1:200 A1